

TASKING Crossview Debugger

Abstract

This document describes the usage of the TASKING Crossview debugger as target system. Normally, there are no special settings required. You may specify the start address of the program (e.g. for running XC166 in single chip mode).

Please note: On some computers the version 6.x of the TASKING Crossview debugger will crash, if you are stopping at the test object breakpoint. Running the test without test object breakpoint normally doesn't cause problems on those computers.

Table of Contents

Abstract	1
TASKING Crossview	2
Setting breakpoints	2
Setting the Start Address	3

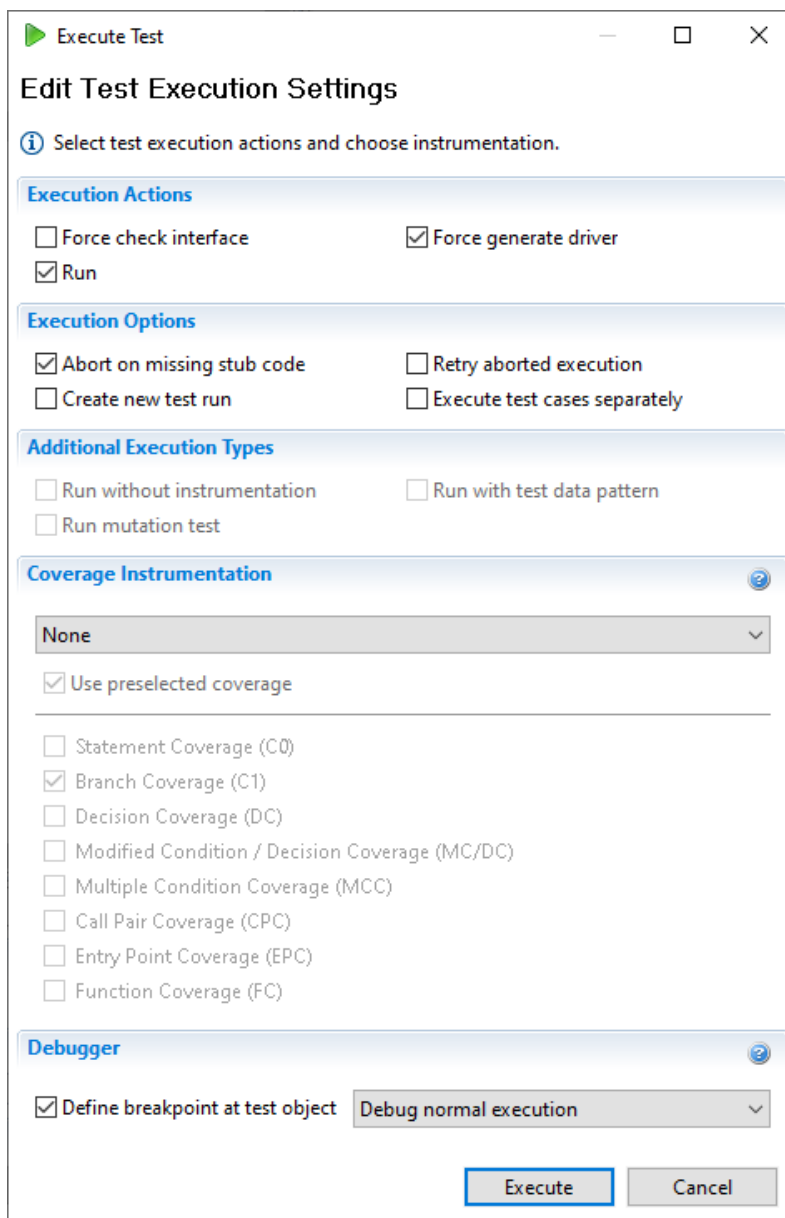
TASKING Crossview

The integration of the TASKING Crossview debugger uses the scripting facilities of the Crossview debugger to execute the test.

Crossview will automatically be started from TESSY for each test execution. Please make sure to close a running instance of Crossview before starting the test run.

Setting breakpoints

When running the test without breakpoint at the test object, TESSY will automatically delete all previously set breakpoints (e.g. from previous debug sessions). The breakpoints will be preserved when running with **Define Breakpoint** in the **Execute Test** dialog.



Execute Test

Edit Test Execution Settings

i Select test execution actions and choose instrumentation.

Execution Actions

Force check interface Force generate driver

Run

Execution Options

Abort on missing stub code Retry aborted execution

Create new test run Execute test cases separately

Additional Execution Types

Run without instrumentation Run with test data pattern

Run mutation test

Coverage Instrumentation

None

Use preselected coverage

Statement Coverage (C0)

Branch Coverage (C1)

Decision Coverage (DC)

Modified Condition / Decision Coverage (MC/DC)

Multiple Condition Coverage (MCC)

Call Pair Coverage (CPC)

Entry Point Coverage (EPC)

Function Coverage (FC)

Debugger

Define breakpoint at test object Debug normal execution

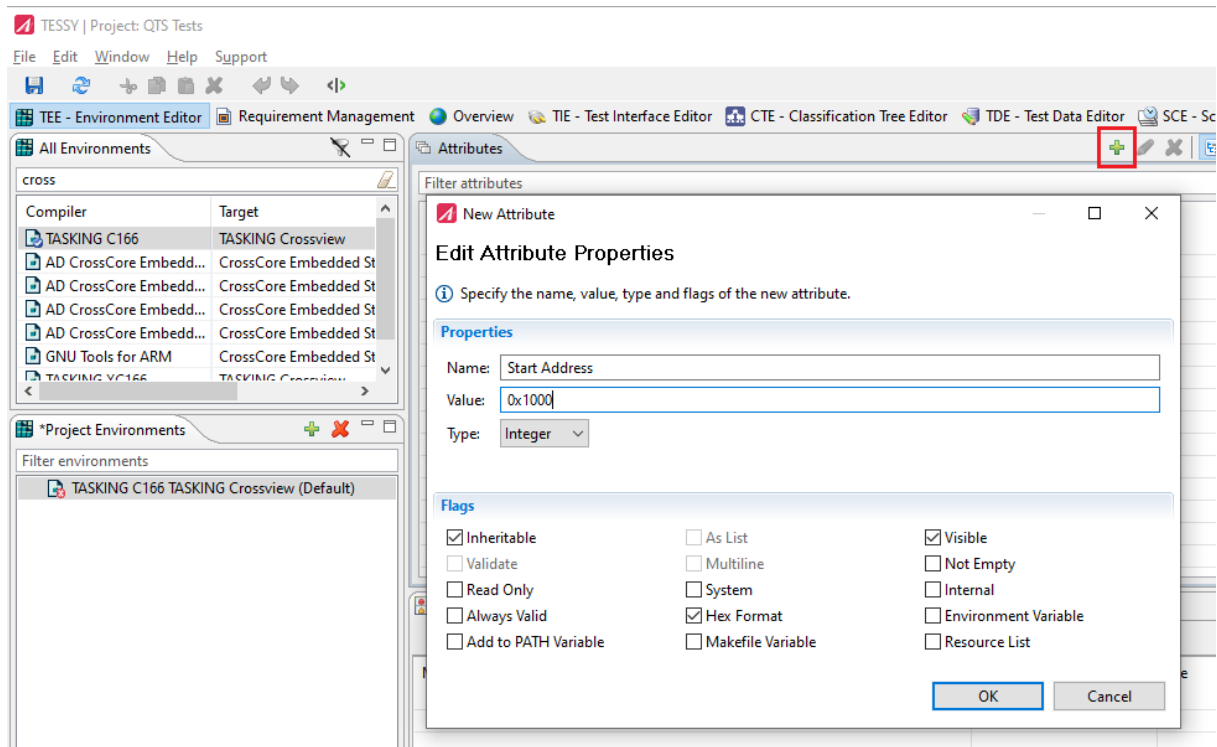
Execute **Cancel**

Please note: When changing from one test object to another or when changing the instrumentation mode, please make sure to run the test **without Define Breakpoint** selected. This will delete all breakpoints and prevent from synchronization problems between TESSY and Crossview.

During debugging of failed testcases, you may set breakpoints within Crossview. These breakpoints will be kept until the next test run without **Define Breakpoint** selected.

Setting the Start Address

It may be required to specify the start address of the program before execution. Normally, the program will start from address 0x0000. If you want the program to be started from a different address, you may use the TEE attribute **Start Address** as shown below.



In the above example, the program will be started from address 0x1000.